

Anti-CEACAM5 hIgG1 Reference Antibody (Labbio)

Product Information

Product Name	Anti-CEACAM5 hIgG1 Reference Antibody (Labbio)
Storage temp.	Store at 2-8°C short term (1-2 weeks).Store at $\leq -20^{\circ}\text{C}$ long term. Avoid repeated freeze-thaw.
Catalog# / Size	GM-87813MAB-1mg / 1 mg GM-87813MAB-5mg / 5 mg GM-87813MAB-25mg / 5 mg*5 vials GM-87813MAB-50mg / 50 mg GM-87813MAB-100mg / 50 mg*2 vials

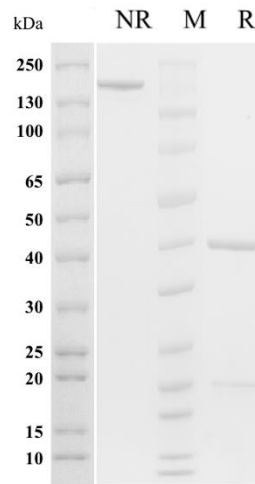
Antibody Information

Expression System	CHO
Aggregation	< 5% as determined by SEC-HPLC
Purity	> 95% as determined by SDS-PAGE
Endotoxin	< 1 EU/mg, determined by LAL gel clotting assay
Sterility	0.2 μm Filtered
Target	CEACAM5
Clone	Labetuzumab
Alternative Names	CD66e, CEACAM5; CEA
Source/Isotype	Human IgG1(REEM), Kappa
Application	Flow cytometry; Bioactivity-ELISA
Description	Carcinoembryonic antigen-related cell adhesion molecule 5 (CEACAM5) also known as CD66e (Cluster of Differentiation 66e), is a member of the carcinoembryonic antigen (CEA) gene family. This gene encodes a cell surface glycoprotein that represents the founding member of the carcinoembryonic antigen (CEA) family of proteins. The encoded protein is used as a clinical biomarker for gastrointestinal cancers and may promote tumor development through its role as a cell adhesion molecule. Additionally, the encoded protein may regulate differentiation, apoptosis, and cell polarity. This gene is present in a CEA family gene cluster on chromosome 19. Alternative splicing results in multiple transcript variants.
Formulation	phosphate-buffered solution, pH 7.2-7.4.

Version:3.3

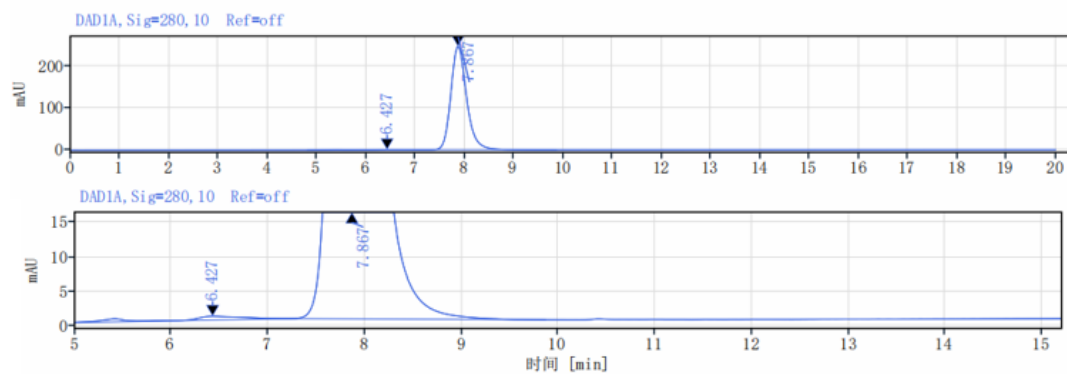
Data Examples

SDS-PAGE



On SDS-PAGE under reducing (R)/non-reducing(N-R) condition. The gel was stained overnight with Coomassie Blue. The purity of the protein is greater than 95%.

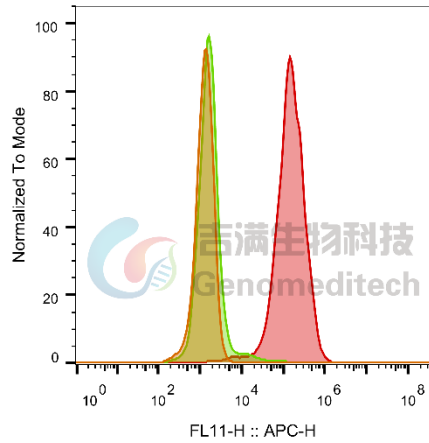
SEC-HPLC



The purity of this product is more than 95% verified by SEC-HPLC

Flow cytometry

H_CEACAM5(CEA) CHO-K1 Cell Line (Catalog # GM-C12814) was stained with Anti-CEACAM5 hlgG1 Reference Antibody (Labbio) (Catalog # GM-87813MAB) or isotype control antibody, followed by anti-Human IgG APC-conjugated Secondary Antibody .

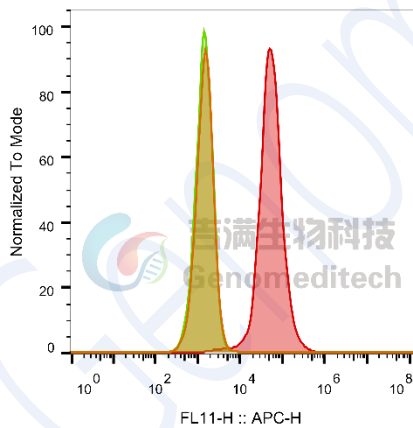


SampleID	Geometric Mean : FL11-H
CHO-K1 anti_CEACAM5+APC-2nd Ab	1257
CHO-K1 H_CEACAM5 H_IgG+APC-2nd Ab	1720
CHO-K1 H_CEACAM5 anti-CEACAM5+APC-2nd Ab	142865

Fig. FACS

Flow cytometry

H_CEACAM5(CEA) HEK-293 Cell Line (Catalog # GM-C24838) was stained with Anti-CEACAM5 hlgG1 Reference Antibody (Labbio) (Catalog # GM-87813MAB) or isotype control antibody, followed by anti-Human IgG APC-conjugated Secondary Antibody .



SampleID	Geometric Mean : FL11-H
HEK-293 anti-CEACAM5+APC-2nd Ab	1482
HEK-293 H_CEACAM5(CEA) H_IgG+APC-2nd Ab	1430
HEK-293 H_CEACAM5(CEA) anti-CEACAM5+APC-2nd Ab	52414

Fig. FACS

Bioactivity-ELISA

Human CEACAM5 Protein; His Tag (Catalog # GM-87543RP) was immobilized at 1 $\mu\text{g/ml}$ (100 $\mu\text{L/well}$). Increasing concentrations of Anti-CEACAM5 hIgG1 Reference Antibody (Labbio) (Catalog # GM-87813MAB) were added.

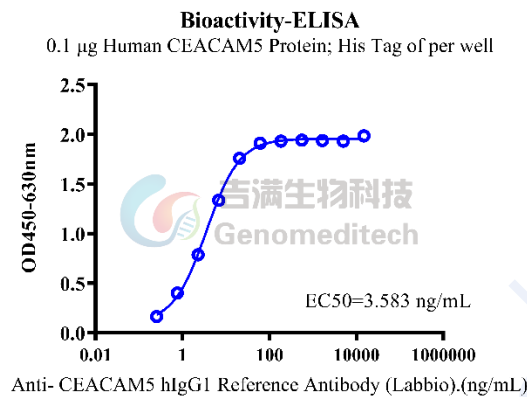


Fig. Assay